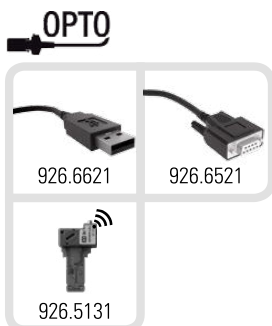
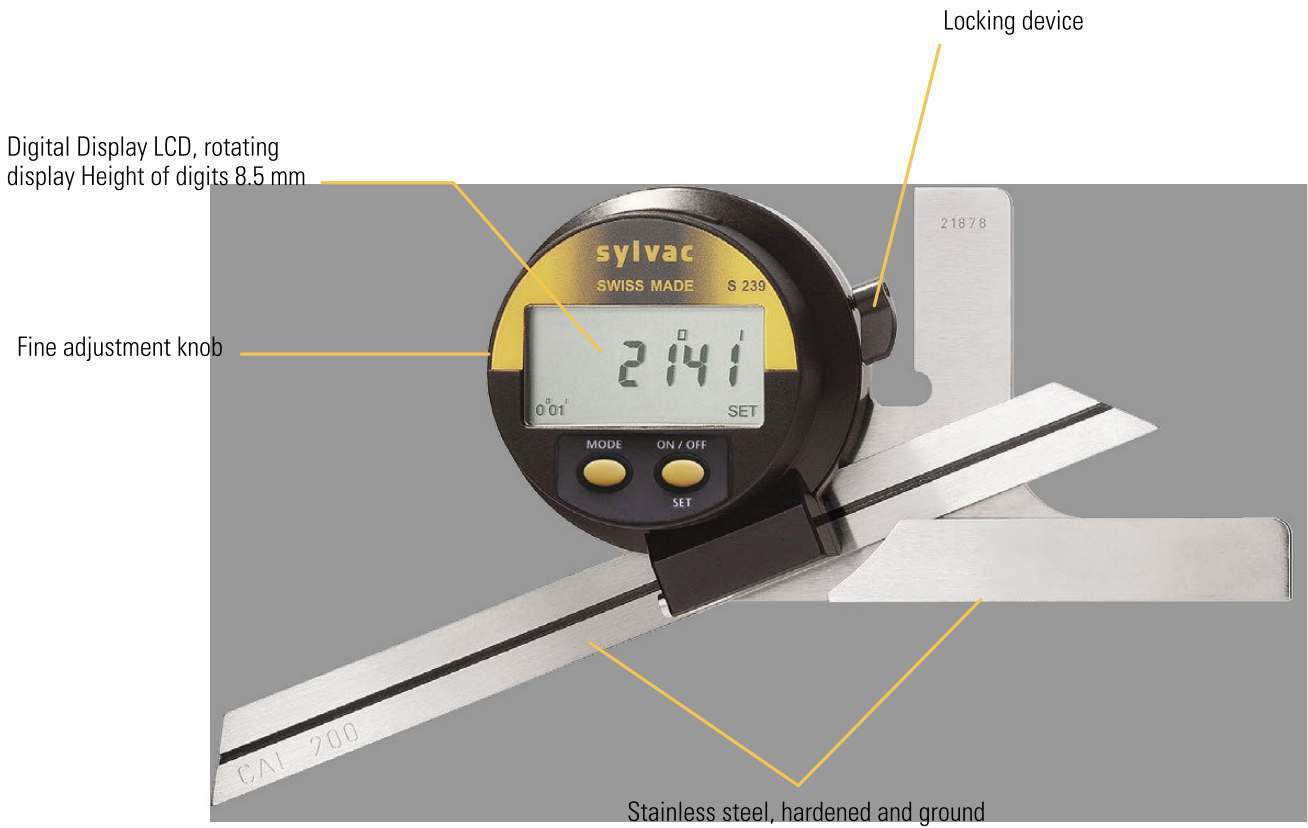


DESCRIPTION

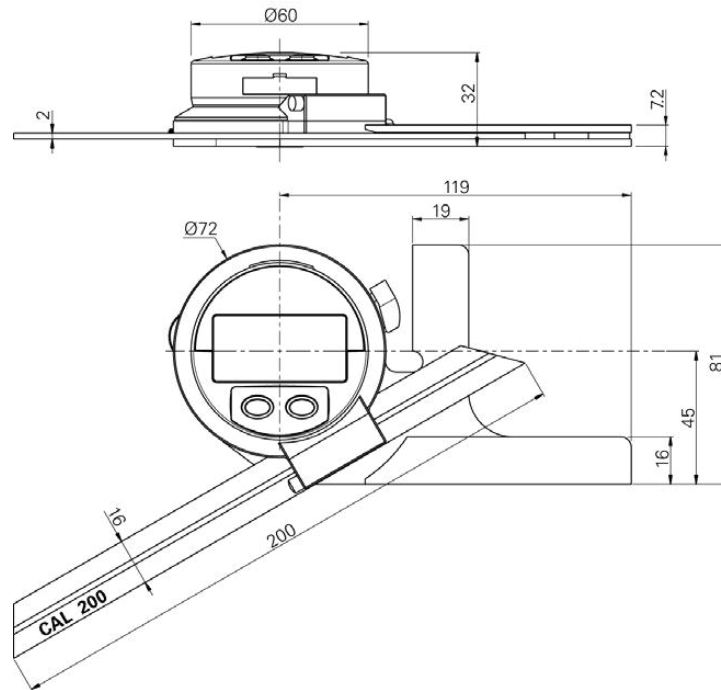
- Measuring range 1x360°, 2x180°, 4x90°
- Mechanical parts in stainless steel



Protractor

S239

DIMENSIONAL DRAWING



TECHNICAL SPECIFICATIONS

		820.1700
Measuring range	mm	0-360°
Max. Error		4 minutes of arc
Resolution		1 minute of arc / 0.01°
Max. rotation speed		1080° / sec
Protection rating according to IEC 529		IP51
S_Connect : Opto		USB / RS232 / Digimatic / Wireless ¹⁾
Selection of measuring direction		●

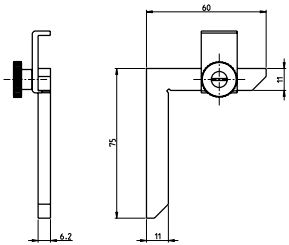
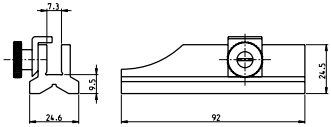
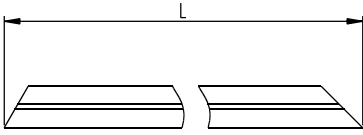
¹⁾ see cables chapter

BASIC INSTRUMENT

- Instrument according to technical specifications
- Wooden box ²⁾
- Scale 200 mm (820.2420)
- Lithium battery CR2032 included
- Instruction manual

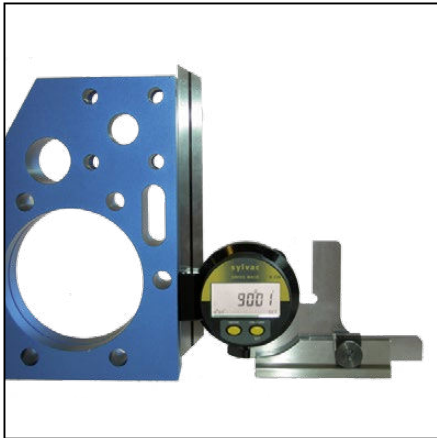
²⁾ Fumigated, compatible ISPM 15 and NIMP 15

ACCESSORIES

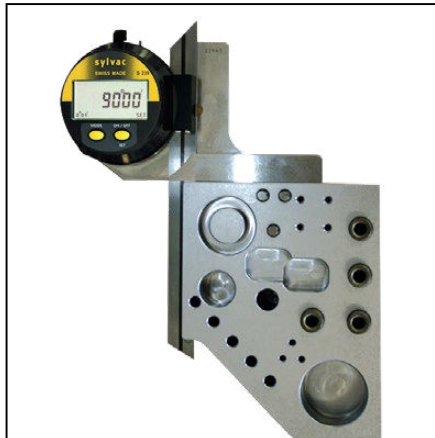


820.2420	Scale L 200 mm
820.2430	Scale L 300 mm
820.2450	Scale L 500 mm
820.2460	Stand for vertical application and small angular measurements
820.2461	Square for small angular measurements

APPLICATIONS



Measurement with accessory type 820.2460



Standard measurement



Measurement with accessory type 820.2461